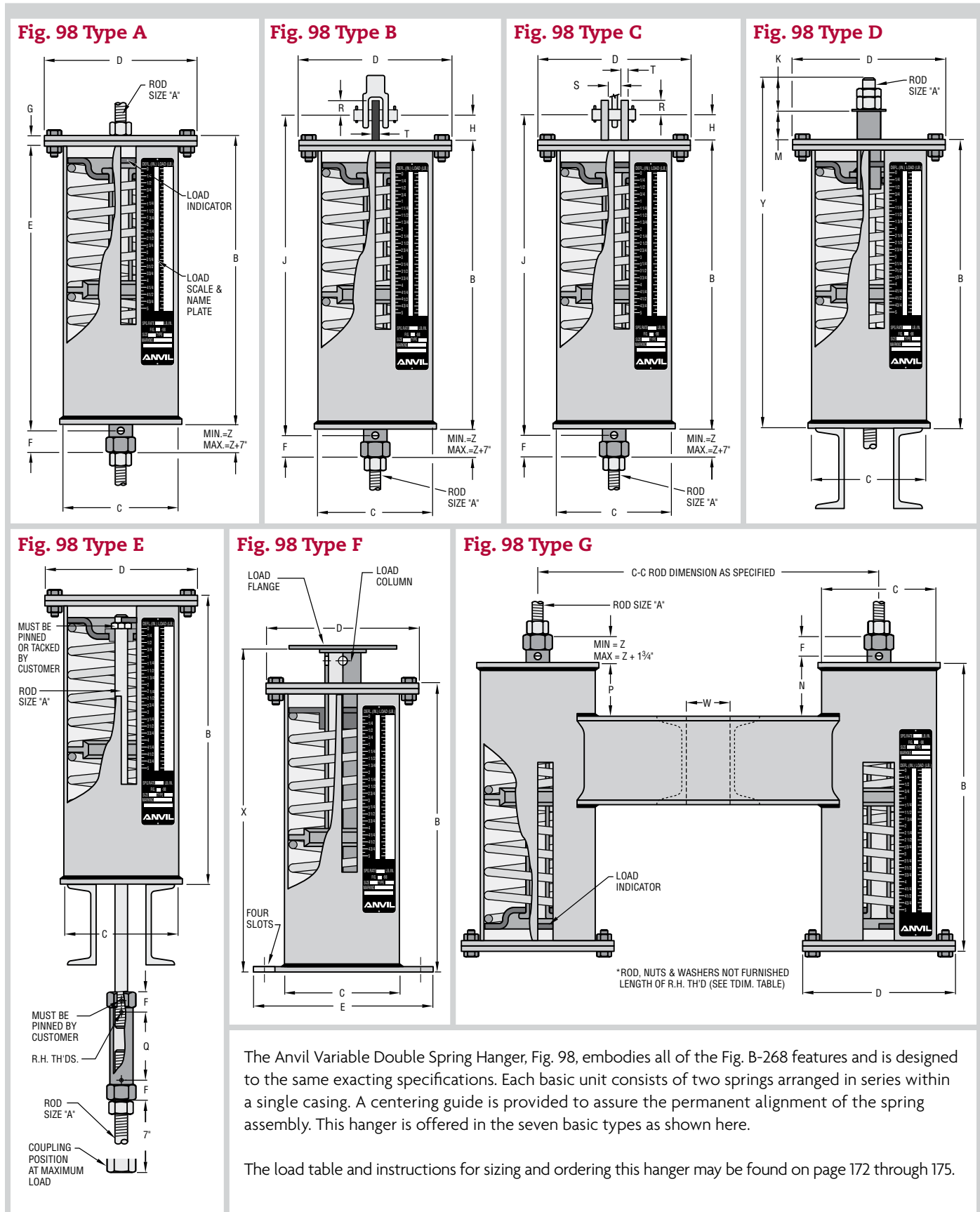


Fig. 98, C-98

Double Spring



SPRING HANGERS

FIG. 98, C-98 DOUBLE SPRING: DIMENSIONS (IN) • WEIGHT (LBS)

Hanger Size	Rod Size A	R.H. Thread Length	Casing		Flange Dia. D	Min. Thread Engage F	Z	Rod Take Out By Type				Type A	Types B, C					Type D			
			Length B	Dia. C				A	B, C	E	G	Thread Depth G	Lug Hole Size	Pin Hgt H	R	Clevis Opening S	Thk. T	Rod Length Y	Nut Allow. K	Height Spacer M	
																					E
0			12 ⁵ / ₈				1 ⁵ / ₁₆	12 ³ / ₁₆	14 ¹ / ₈		1 ¹ / ₂								19 ³ / ₈		
1	1/2	9	14 ¹ / ₈	4	5 ¹ / ₈	1 ⁵ / ₁₆	1 ⁵ / ₁₆	13 ¹⁵ / ₁₆	15 ⁷ / ₈	9	1 ¹ / ₂	7/16	1 ¹ / ₁₆	1 ¹ / ₂	1 ¹ / ₄	7/8	1/4	21 ¹ / ₈	1 ¹ / ₄	5 ¹ / ₂	
2			15 ⁷ / ₈				1 ¹ / ₁₆	15 ¹⁵ / ₁₆	17 ¹ / ₈		1 ¹ / ₄							22 ¹ / ₂			
3	1/2	9	14	5 ⁹ / ₁₆	6 ¹⁵ / ₁₆	1 ⁵ / ₁₆	1 ³ / ₁₆	13 ¹³ / ₁₆	15 ³ / ₈	9	1 ⁷ / ₈	7/16	1 ¹ / ₁₆	1 ¹ / ₂	1 ¹ / ₄	7/8	1/4	20 ³ / ₄	1 ¹ / ₄	5 ¹ / ₂	
4			15 ¹ / ₄				1 ³ / ₁₆	15 ³ / ₁₆	17 ³ / ₈		2 ³ / ₈							22			
5			16 ³ / ₈				1 ¹¹ / ₁₆	15 ¹⁵ / ₁₆	17 ³ / ₈		1 ³ / ₄							23 ³ / ₈			
6	5/8	9	16 ¹¹ / ₁₆	6 ³ / ₈	8 ³ / ₈	1 ⁵ / ₁₆	1 ³ / ₁₆	15 ¹⁵ / ₁₆	18 ¹ / ₁₆	9	1 ⁷ / ₈	5/8	1 ³ / ₁₆	1 ¹ / ₂	1 ¹ / ₄	1 ¹ / ₁₆	1/4	23 ¹¹ / ₁₆	1 ¹ / ₂	5 ¹ / ₂	
7			18 ³ / ₈				1 ¹ / ₈	18 ³ / ₁₆	20 ⁹ / ₁₆		2 ³ / ₁₆							25 ⁵ / ₈			
8			19 ⁹ / ₁₆				1 ¹¹ / ₁₆	18 ¹¹ / ₁₆	20 ¹³ / ₁₆		1 ¹ / ₄							26 ⁹ / ₁₆			
9	3/4	9	20 ³ / ₁₆	8 ⁵ / ₈	10 ³ / ₄	1 ¹ / ₄	1 ⁵ / ₁₆	18 ⁷ / ₈	21 ³ / ₈	9	2 ¹¹ / ₁₆	1	1 ⁵ / ₁₆	1 ¹ / ₂	1 ¹ / ₄	1 ¹ / ₄	3/8	27 ⁷ / ₁₆	1 ³ / ₄	5 ¹ / ₂	
10			22 ⁵ / ₈				1	21 ³ / ₈	23 ³ / ₈		2 ³ / ₄							29 ⁷ / ₈			
11		10	18 ¹ / ₄	8 ⁵ / ₈	10 ³ / ₄	1 ¹ / ₄	7 ⁵ / ₈	16 ³ / ₈	19 ³ / ₈	12	2 ⁵ / ₈	1	1 ¹ / ₄	2	1 ¹ / ₂	1 ⁵ / ₈	1/2	27 ¹ / ₄	2 ¹ / ₄	5 ¹ / ₂	
12	19 ¹ / ₂	3/4	24 ³ / ₄				3 ³ / ₄	23 ³ / ₈	3 ¹ / ₂		27 ¹ / ₄							3 ³ / ₄			32 ³ / ₈
13	1	10	24 ³ / ₄	8 ⁵ / ₈	10 ³ / ₄	1 ¹ / ₄	3/4	23 ¹ / ₄	26 ¹ / ₄	12	3 ¹ / ₂	1	1 ¹ / ₄	2	1 ¹ / ₂	1 ⁵ / ₈	1/2	32 ³ / ₈	3	5 ¹ / ₂	
14	1 ¹ / ₄	24 ⁷ / ₈	1/2				23 ³ / ₈	27 ³ / ₈	3 ³ / ₄		33 ³ / ₈										
15	1 ¹ / ₄	10	24 ⁷ / ₈	8 ⁵ / ₈	10 ³ / ₄	1 ¹⁵ / ₁₆	1/2	23 ³ / ₈	27 ³ / ₈	12	3 ¹ / ₄	1	1 ¹ / ₂	2	2	5/8	33 ³ / ₄	3	5 ¹ / ₂		
16	1 ¹ / ₂	11	29 ³ / ₈		11 ³ / ₈		2	28 ⁹ / ₁₆	32 ¹⁵ / ₁₆		7						4 ¹ / ₁₆			1 ³ / ₈	1 ³ / ₄
17	1 ³ / ₄	12	34	12 ³ / ₄	15 ³ / ₈	2 ¹ / ₈	32 ¹³ / ₁₆	37 ³ / ₁₆	7	4 ³ / ₁₆	2	2 ¹ / ₂	3	2 ⁵ / ₈	3/4	43 ¹ / ₂	4				
18	2	12	33 ³ / ₄		12 ³ / ₄	15 ³ / ₈	2 ¹ / ₁₆	31 ³ / ₈	37 ³ / ₁₆	7	4 ¹ / ₈					2 ³ / ₈		2 ¹ / ₄	4	3	2 ¹ / ₈
19	2 ¹ / ₄	13	37 ³ / ₄	2 ⁹ / ₁₆		35 ¹ / ₂	42 ¹ / ₈	7	4	2 ¹ / ₄	2 ⁵ / ₈	4 ¹ / ₂	4	3	3 ¹ / ₈	1	55 ³ / ₁₆				
20	2 ¹ / ₂	14	44 ¹ / ₄	2 ¹¹ / ₁₆	42 ¹ / ₈	48 ³ / ₄	7	4 ¹ / ₈	2 ¹ / ₄	2 ⁷ / ₈	4	4					3	3 ⁵ / ₈	1	55 ³ / ₁₆	5 ⁹ / ₁₆
21	2 ³ / ₄	14	49 ³ / ₈	2 ¹ / ₁₆	45 ¹ / ₁₆	52 ¹¹ / ₁₆	7	3 ⁵ / ₁₆	2 ³ / ₄	3 ¹ / ₈	4 ¹ / ₂		4	3	3 ⁵ / ₈	1				60 ⁵ / ₈	
22	3	15	62	3 ¹ / ₂	58 ¹ / ₈	66 ³ / ₈	7	4 ¹ / ₈	3	3 ³ / ₈	5	4					3	3 ⁵ / ₈	1	73 ¹ / ₈	6 ⁵ / ₈

Hanger Size	Type F										Type G				Weight						
	E' Bottom Flange		Bottom Flange		Load Col. Dia.	Load Flange		Length X ■		Channel Size (lbs/ft)	Max C-C	Space Between Channels - W	P	Type							
	Size Sq.	Bolt Circle	Min	Max		Bolts	Thick	Dia.	Thick					Min	Max	A,B,C	D,E	F	G*		
0																					
1	7 1/2	7	8 3/4	5/8	1/4	1.90	3 7/8	3/16	14 ³ / ₁₆	16 ³ / ₁₆	C3 x 4.1	24	5/8	1 1/2	12	12	20	37			
2									15 ¹⁵ / ₁₆	17 ¹⁵ / ₁₆					14	14	21	41			
3	7 1/2	7	8 3/4	3/4	1/4	2.88	5 3/4	3/16	15 ⁵ / ₈	17 ⁵ / ₈	C3 x 4.1	30	3/4	2	16	16	23	45			
4									16 ³ / ₈	18 ⁷ / ₈					22	21	35	55			
5									18 ¹ / ₄	20 ¹ / ₄					25	24	39	61			
6	9	8	10 7/8	3/4	3/8	3.50	6 3/8	1/4	18 ³ / ₈	20 ³ / ₈	C3 x 4.1	36	1	2	27	26	41	65			
7									20 ⁵ / ₁₆	22 ⁵ / ₁₆					41	40	62	93			
8									21 ¹ / ₄	23 ¹ / ₄	C4 x 5.4	36	1 1/4	3	61	52	75	133			
9									21 ⁷ / ₈	23 ³ / ₈					C4 x 5.4	36	1 1/4	3	97	94	136
10	13 1/4	10 1/16	16 1/2	3/4	1/2	4.50	8 3/8	1/2	24 ⁵ / ₁₆	26 ⁵ / ₁₆	C5 x 6.7	36	1 1/2	3					114	108	150
11									19 ¹⁵ / ₁₆	21 ¹⁵ / ₁₆					96	95	134	209			
12									21 ³ / ₁₆	23 ³ / ₁₆	C5 x 6.7	36	1 1/2	3	108	104	144	223			
13	13 1/4	10 1/16	16 1/2	3/4	1/2	4.50	8 3/8	1/2	26 ⁷ / ₁₆	28 ⁷ / ₁₆					C6 x 10.5	33	1 1/2	3	144	139	181
14									26 ⁹ / ₁₆	28 ⁹ / ₁₆	153	147	188	323							
15						4.50	8 3/8	1/2	26 ⁹ / ₁₆	28 ⁹ / ₁₆	C8 x 11.5	36	2 1/8	3	172	163	201	368			
16	13 1/4	10 1/16	16 1/2	3/4	1/2	2.00			31 ⁷ / ₈	33 ⁷ / ₈					218	202	241	462			
17													36	38	273	247	287	572			
18									35 ⁵ / ₁₆	37 ⁵ / ₁₆	C12 x 20.7	42	2 3/8	3	512	477	550	1,056			
19	17 1/4	15 3/4	22	3/4	5/8	2.50	12 1/2	1/2	39 ¹³ / ₁₆	41 ¹³ / ₁₆					C12 x 20.7	40	2 3/8	3	600	548	624
20																					46 ⁵ / ₁₆
21	17 1/4	15 3/4	22	3/4	5/8	3.00	12 1/2	1/2	51 ⁷ / ₈	53 ⁷ / ₈	C15 x 33.9	48	3 3/8	3	940	845	872	1,965			
22																					64

■ Hanger take-out or installed height. With pipe movement up, cold to hot, installed height should be the mid point between the minimum and maximum "X" dimension, plus thickness of load flange. With pipe movement down, cold to hot installed height should be mid-point between the minimum and maximum "X" dimension, plus the amount of vertical movement and load flange thickness. (Type F only).

* Weight based on 24" center-to-center dimension. See page 180 for Type F roller and guided load column information. Attachment rods and nuts not furnished.

