

Fig. 45

Channel Assembly

Material: Carbon steel

Finish: Plain or Hot-Dip Galvanized

Ordering: Fig. 45 channel assembly; channel size, rod size, name, finish and C to C. Note: that $L = (C \text{ to } C) + 2M + W$

Note: Can also be used with a U-bolt Fig. 137 & Fig. 60 washer plates to secure pipe to the center of channel assembly.

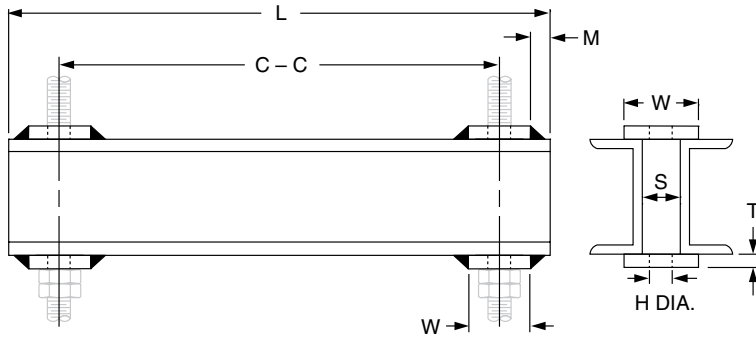


FIG. 45: DIMENSIONS (IN)

Rod Dia	3/8	1/2	5/8	3/4	7/8	1	1 1/4	1 1/2	1 3/4	2	2 1/4	2 1/2	2 3/4	3	3 1/4	3 1/2
H Hole	1/2	5/8	3/4	7/8	1	1 1/4	1 1/2	1 3/4	2	2 1/4	2 1/2	2 3/4	3	3 1/4	3 1/2	3 3/4
S	9/16	1 1/16	1 3/16	1 5/16	1 1/16	1 3/8	1 5/8	1 7/8	2 1/4	2 1/2	2 3/4	3	3 1/4	3 1/2	3 3/4	4
W	3	3	3	4	4	4	5	5	5	5	6	6	6	6	6	7
T	1/4	1/4	3/8	3/8	1/2	1/2	1/2	3/4	3/4	3/4	3/4	3/4	3/4	3/4	3/4	3/4
M	3/8	3/8			3/8	3/8	3/8	3/8	3/8	3/8	3/8	3/8	3/8	3/8	3/8	1/2

FIG. 45: WEIGHTS (LBS) • LOADS (LBS) • C TO C = SPAN (IN)

Size	Wt./Ft. 2C's	Maximum Load (lbs); Based on C to C Dimensions at Max Temperature of 250° F															
		12	14	16	18	20	22	24	26	28	30	36	42	48	54	60	
3	8.2	8,800	7,500	6,600	5,800	5,200	4,800	4,400	3,900	3,600	3,500	2,900	2,500	2,200	1,900	1,700	
4	10.8	15,200	13,100	11,400	10,200	9,100	8,300	7,500	7,000	6,500	6,100	5,100	4,300	3,800	3,300	3,000	
5	13.4	-	-	-	16,000	14,400	13,100	12,000	11,100	10,300	9,600	8,000	6,800	6,000	5,300	4,800	
6	21.0	-	-	-	26,600	24,000	21,800	20,000	18,400	17,100	16,000	13,300	11,400	10,000	8,800	8,000	
8	23.0	-	-	-	-	-	-	32,300	29,800	27,700	25,800	21,500	18,500	16,100	14,300	12,900	
10	30.6	-	-	-	-	-	-	53,500	49,400	45,800	42,800	35,700	30,600	26,700	23,800	21,400	
12	41.4	-	-	-	-	-	-	-	-	-	-	57,000	48,900	42,800	38,000	34,200	
15	67.8	-	-	-	-	-	-	-	-	-	-	111,000	95,300	83,400	74,100	66,700	

Fig. 46

Universal Trapeze Assembly

Material: Carbon steel

Finish: Plain or Hot-Dip Galvanized

Service: Trapeze assembly is to be suspended by two rods with Fig. 60 washer plates and is designed for top loading exclusively.

Ordering: Specify size number, figure number, name, finish, C to C dimension and hole size "H". If holes "J" or hole "D" are required, also specify hole size and dimensions "K" and "M" or "B".

Note: Larger C to C dimensions are available upon request.

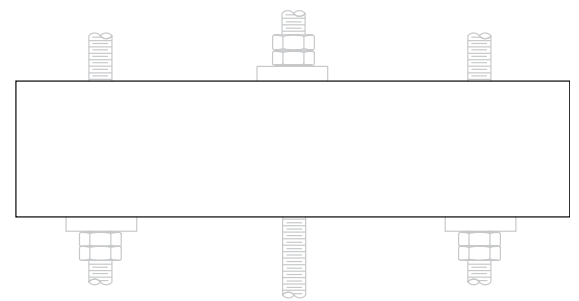
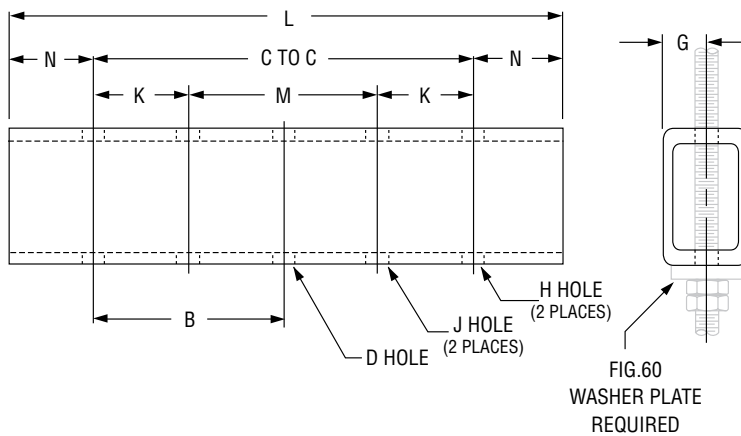


FIG. 46: DIMENSIONS (IN) • WEIGHT (LBS)

Size	Size Tubing	Weight	Max Hole Dia. H, J, D	G	N	C to C = Span (in)														
						12	14	16	18	20	22	24	26	28	30	36	42	48	54	60
						L (in)														
1	1/4 x 2 x 2	5.40	1 1/8	1	1 1/2	15	17	19	21	23	25	27	29	31	33	39	-	-	-	-
2	1/4 x 3 x 2	7.10				-	-	-	23 1/4	25 1/4	27 1/4	29 1/4	31 1/4	33 1/4	35 1/4	41 1/4	47 1/4	53 1/4	59 1/4	65 1/4
3	3/16 x 4 x 3	8.14	1 5/8	1 1/2	2 1/2	-	-	-	23	25	27	29	31	33	35	41	47	53	59	65
4	1/4 x 4 x 4	12.00	1 7/8	2	2 5/8	-	-	-	23 1/4	25 1/4	27 1/4	29 1/4	31 1/4	33 1/4	35 1/4	41 1/4	47 1/4	53 1/4	59 1/4	65 1/4
5	1/4 x 6 x 4	15.42	2 3/8		3 3/8	-	-	-	-	-	-	30 3/4	32 3/4	34 3/4	36 3/4	42 3/4	48 3/4	54 3/4	60 3/4	66 3/4
6	1/4 x 8 x 4	18.80	2 7/8		4	-	-	-	-	-	-	32	34	36	38	44	50	56	62	68

FIG. 46: MAXIMUM LOAD (LBS); BASED ON C TO C DIMENSIONS AT MAX TEMPERATURE OF 250° F

Size	FIG. 46: MAXIMUM LOAD (LBS); BASED ON C TO C DIMENSIONS AT MAX TEMPERATURE OF 250° F														
	12	14	16	18	20	22	24	26	28	30	36	42	48	54	60
1	2,600	2,300	1,900	1,700	1,500	1,400	1,300	1,200	1,100	1,000	8,80	-	-	-	-
2	6,700	5,700	5,000	4,500	4,000	3,600	3,300	3,100	2,800	2,700	2,200	-	-	-	-
3	-	-	-	5,800	5,200	4,800	4,400	3,900	3,600	3,500	2,900	2,500	2,200	1,900	1,700
4	-	-	-	10,200	9,100	8,300	7,500	7,000	6,500	6,100	5,100	4,300	3,800	3,300	3,000
5	-	-	-	-	-	-	12,000	11,100	10,300	9,600	8,000	6,800	6,000	5,300	4,800
6	-	-	-	-	-	-	20,000	18,400	17,100	16,000	13,300	11,400	10,000	8,800	8,000

Fig. 50

Equal Leg Angle for Trapeze Assembly

Material: Carbon steel

Finish: Plain or Hot-Dip Galvanized

Ordering:

If two holes "H" are required:

Specify Fig. 50 angle
(nominal size, C to C, H, total weight and load)

If two holes "H" and hole "D" are required:

Specify Fig. 50 angle
(nominal size, B, C to C, D, H, total weight and load)

If two holes "H" and two holes "J" are required:

Specify Fig. 50 angle
(nominal size, C to C, H, J, K, M, total weight and load)

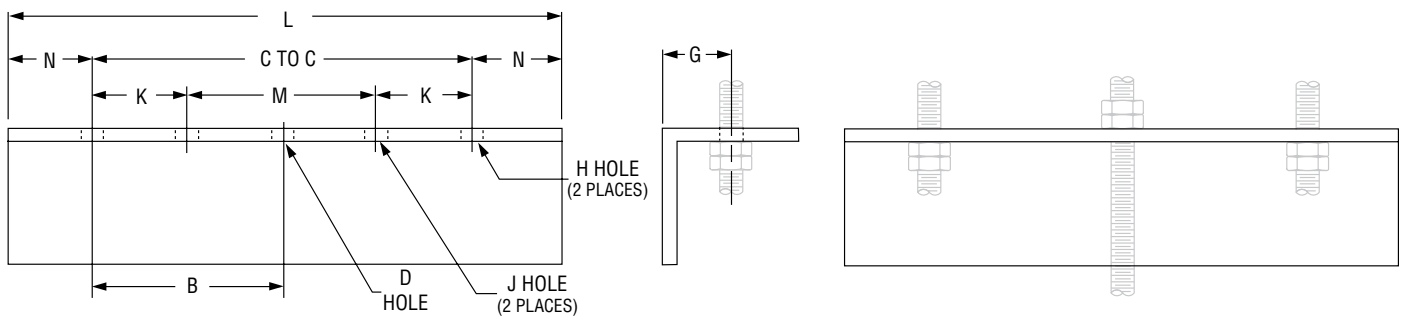


FIG. 50: DIMENSIONS (IN) • LOAD (LBS) • WEIGHT (LBS)

Size	Weight Per/Ft	G	N	Max Rod Size H	C to C = Span in Inches										
					8	10	12	14	16	18	20	22	24	28	30
					Maximum Load; Based on C to C Dimensions at Max Temperature of 250°F										
1½ x ¼	2.34	¾	1¼	½	780	624	520	446	390	346	312	284	260	223	208
2 x ¼	3.19	1⅝	1½	⅝	1,500	1,200	1,000	856	750	667	600	545	500	428	400
2 x ⅜	4.70			¾	2,100	1,680	1,400	1,200	1,050	933	840	763	700	600	560
2½ x ⅜	5.90	1⅝		1	3,420	2,736	2,280	1,954	1,710	1,520	1,368	1,244	1,140	977	912
3 x ⅜	7.20	1¾	1¾	1¼	4,980	3,984	3,320	2,846	2,490	2,130	1,992	1,810	1,660	1,423	1,328
3 x ½	9.40				6,600	5,280	4,400	3,772	3,300	2,933	2,640	2,400	2,200	1,886	1,760
4 x ½	12.80	2½			2	2	12,000	9,600	8,000	6,858	6,000	5,333	4,800	4,364	4,000