

Fig. 100

Extended Pipe Clamp

Size Range: 1/2" through 8"

Material: Carbon steel

Finish: Plain or Hot-Dip Galvanized with Zinc Plated Fasteners

Service: For attachment to structure without use of rods.

Maximum Temperature: Plain 650° F, Galvanized 450° F

Ordering: Specify pipe size, figure number, name and finish.

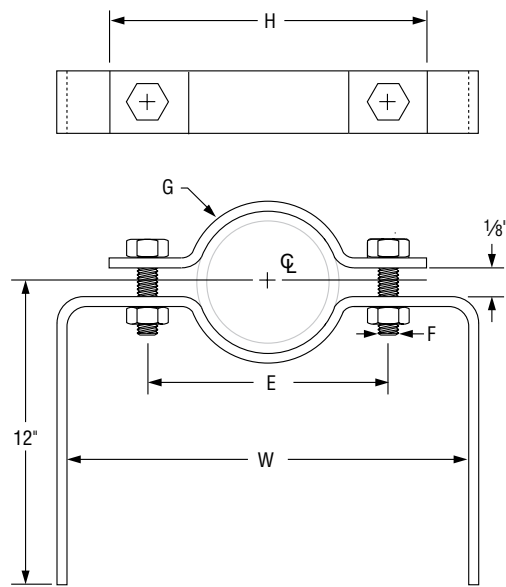


FIG. 100: WEIGHT (LBS) • DIMENSIONS (IN)

Pipe Size	W	E	F	G Width	H	Weight
1/2	5 5/8	2 7/8	3/8	1	4 1/4	1.85
3/4	5 7/8	3 1/8			4 1/2	2.20
1	6 3/8	3 5/8			5	2.25
1 1/4	6 7/8	4 1/8			5 1/2	2.34
1 1/2	7 1/8	4 3/8	1/2	1 1/4	5 3/4	2.39
2	8 3/8	5 1/8			6 7/8	3.25
2 1/2	8 7/8	5 5/8			7 3/8	3.40
3	10	6 3/4			8 1/4	3.58
4	10 5/8	7 3/8	5/8	2	9 1/8	4.74
5	12 3/8	8 3/8			10 1/8	5.09
6	13 1/2	9 3/4			12	8.23
8	15 1/2	11 3/4			14	9.25

Fig. 103

Offset Pipe Clamp

Size Range: 3/4" through 8"

Material: Carbon steel

Finish: Plain or Hot-Dip Galvanized with Zinc Plated Fasteners

Service: For use in supporting piping away from wall or floor.

Maximum Temperature: Plain 650° F, Galvanized 450° F

Ordering: Specify pipe size, figure number, name and finish

Service: For use in supporting horizontal piping away from the wall or floor (not to be used as a riser type support)

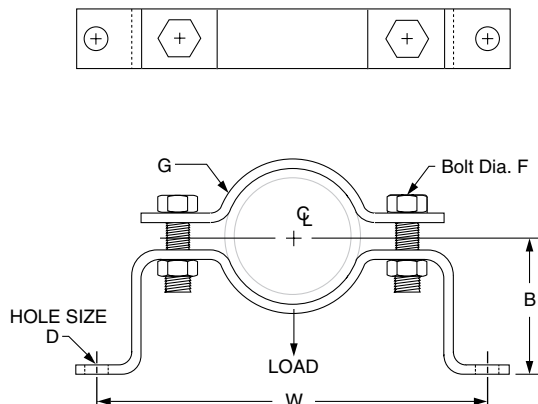


FIG. 103: LOADS (LBS) • WEIGHT (LBS) • DIMENSIONS (IN)

Pipe Size	Max Load	Weight	W	B	D	Bolt Dia. F	G Width
3/4	190	1.50	8 3/4	2 1/2	7/16	3/8	1 1/4
1		1.60	9 1/4	2 5/8			
1 1/4		1.70	9 3/4	2 13/16			
1 1/2		1.80	10	2 15/16			
2	420	2.70	11 1/4	3 3/16	9/16	1/2	1 1/2
2 1/2		2.90	11 3/4	3 7/16			
3		3.20	12 7/8	3 3/4			
4		4.60	13 7/8	4 1/4			
5	610	7.30	15 5/8	4 3/4	1 1/16	5/8	2
6		7.80	16 3/4	5 5/16			
8		9.00	18 3/4	6 3/16			

Fig. 212 (Formerly Afcon Fig. 415)

Medium Pipe Clamp

Size Range: 1/2" through 30"

Material: Carbon steel

Finish: Plain or Hot-Dip Galvanized with Zinc Plated Bolts & Nuts

Service: Recommended for suspension of cold pipe lines or hot lines where no insulation is required.

Maximum Temperature: Plain 750° F, Galvanized 450° F

Approvals: Complies with Federal Specification A-A-1192A (Type 4)

WW-H-171-E (Type 4), ANSI/MSS SP-69 and MSS SP-58 (Type 4).

UL, ULC Listed and FM Approved (Sizes 3/4" - 8").

Installation: Normally used with weldless eye nut Fig. 290, page 119 or eye rod.

Features:

- Clamps tightly to pipe.
- Wide range of sizes.
- Equal gap design on many sizes.

Ordering: Specify pipe size, figure number, name and finish.

Note: The "C" gap dimension ensures adequate clearance at the top attachment point for a weldless eye nut or other appropriate rod attachment. This gap may or may not be present on the bottom portion of the clamp. If different loads or dimensions are required, refer to Fig. 42 SD non-standard two bolt pipe clamp.



Note: This picture is representative of a typical Figure 212. Distance between clamp ears beneath pipe may or may not be equal to upper gap.

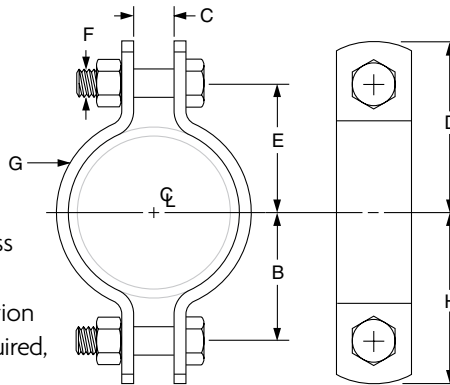


FIG. 212: DIMENSIONS (IN) • LOADS (LBS) • WEIGHT (LBS)

Pipe Size	Span Ft.	Max Load For Service Temp		Weight	B	C	Rod Take Out E	H	D	F	G Width	
		650° F	750° F									
1/2	7*	500	-	0.29	1	1/2	1 3/16	1 17/32	1 23/32	5/16	1	
3/4				0.33	1 1/8		1 1/4	1 21/32	1 25/32			
1				0.35	1 1/8		1 3/8	1 29/32	1 29/32			
1 1/4				0.38	1 1/16		1 5/8	1 31/32	2 5/32			
1 1/2	9*	800	-	0.43	1 1/16	5/8	1 11/16	2 3/32	2 7/32	1/2		
2	10*			1.10	2 1/8		2 1/8	2 3/4	2 3/4			
2 1/2	11*	1,040	930	1.20	2 5/8	3/4	2 5/8	3 1/4	3 1/4	3/4		
3	12*			1.40	2 7/8		2 7/8	3 1/2	3 1/2			
3 1/2	13*			1.50	3 3/16		3 3/16	3 13/16	3 13/16			
4	14*			1.80	3 1/2		3 1/2	4 1/4	4 1/4			
5	16*	1,615	1,440	2.60	4 3/16	1 1/4	4 3/16	4 15/16	4 15/16	5/8		1 1/4
6	17*			5.40	4 7/8		4 7/8	5 3/4	5 3/4	5/8		1 1/2
8	19*	2,490	2,220	6.50	6	1	6	6 7/8	6 7/8	7/8		
10	22*			13.60	7 1/16		7 1/16	8 9/16	8 9/16			
12	23*			15.20	8 1/16		8 1/16	9 9/16	9 9/16			
14	20			20.50	9 1/4		9 1/4	10 5/8	10 5/8			
16	15	3,060	2,730	22.30	10 1/4	1 1/8	10 1/4	11 5/8	11 5/8	1	2 1/2	
18	15			31.60	11 5/8		1 1/4	11 5/8	13			13
20	12	3,500	3,360	35.80	12 3/4	2	12 3/4	14 1/8	14 1/8	1 1/8		
24	12			53.10	15 1/4		1 5/8	15 1/4	16 7/8	16 7/8	1 1/4	3
30	9			113.90	19		19	21 1/8	21 1/8	1 3/4	4	

Clamps may be furnished with square ends. "Span" represents the maximum recommended distance between hangers on a continuous & straight run of horizontal standard weight steel pipe filled with water. In all cases, verify that chosen location of hangers does not subject hangers to a load greater than the maximum recommended load shown above. For vapor service, the presence of fittings or insulation, and other weights and types of pipe, spans may either increase or decrease. In all cases, verify that chosen location of hanger does not subject hangers to a load greater than the maximum recommended load shown. *Indicates that span represents the maximum span for water filled pipe as given in Table 1 of page 268.

Fig. 212FP

Seismic Bracing Clamp

Size Range: 2 1/2" through 12"

Material: Carbon steel

Finish: Plain or Hot-Dip Galvanized with Zinc Plated Bolts & Nuts

Service: For seismic bracing, to be used with Fig. 113 brace fitting. Pipe clamp bolt holes are designed to match holes in brace fitting.

Maximum Temperature: Plain 750° F, Galvanized 450° F

Approvals: Complies with Federal Specification A-A-1192A (Type 4) WW-H-171-E (Type 4), ANSI/MSS SP-69 and MSS SP-58 (Type 4).

Installation: Designed for use with Fig. 113 brace fitting, see page 101.

Ordering: Specify pipe size, figure number, name and finish.

Note: The "C" gap dimension should be used at the upper and lower locations to ensure proper installation of the clamp.

Standard Figure 212 will be furnished for sizes 2 1/2" thru 4".

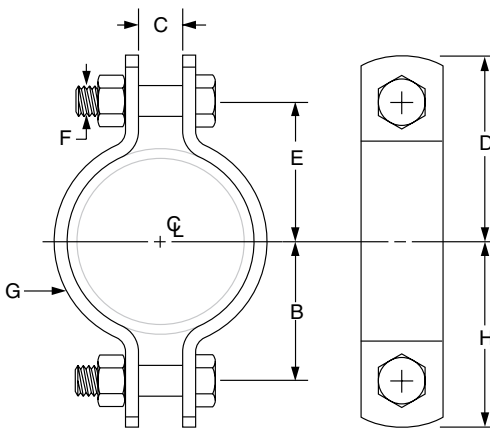


FIG. 212FP: DIMENSIONS (IN) • LOADS (LBS) • WEIGHT (LBS)

Pipe Size	Max Load For Service Temp		Weight (lbs)	B	C	Rod Take Out E	H	D	F	G Width	
	650° F	750° F									
2 1/2	1,040	930	1.20	2 5/8	5/8	2 5/8	3 1/4	3 1/4	1/2	1	
3			1.40	2 7/8		2 7/8	3 1/2	3 1/2			
3 1/2			1.50	3 1/16		3 3/16	3 3/16	3 3/16			
4			1.80	3 1/2		3 1/2	4 1/4	4 1/4			
5			2.50	4 3/16	3/4	4 3/16	4 15/16	4 15/16			
6			5.20	4 7/8	1 1/4	4 7/8	5 3/4	5 3/4			
8			6.30	6		6	6 7/8	6 7/8			
10			13.60	7 7/16		7 7/16	8 9/16	8 9/16			
12			15.20	8 7/16	1	8 7/16	9 9/16	9 9/16			2

- Table of Contents
- Pictorial TOC
- General Notes
- Clevis Hangers & Shields
- Ring Hangers
- Pipe Clamps**
- Riser Clamps
- U-Bolts & Straps
- CPVC
- AWWA
- Beam Clamps
- Ceiling Plates & Flanges
- Wall Brackets
- Welded Attachments
- Concrete Inserts & Attachments
- Rod & Eye Rods
- Rod Couplings & Turnbuckles
- Swivel Attachments
- Hardware & Accessories

Fig. 216 (Formerly Afcon Fig. 420)

Heavy Pipe Clamp

Size Range: 3" through 42"

Material: Carbon steel

Finish: Plain or Hot-Dip Galvanized with Zinc Plated Bolts & Nuts

Service: Recommended for suspension of pipe lines where no insulation is required.

Maximum Temperature: Plain 750° F, Galvanized 450° F

Approvals: Complies with Federal Specification A-A-1192A (Type 4)

WW-H-171-E (Type 4), ANSI/MSS SP-69 and MSS SP-58 (Type 4).

Installation: Normally used with welded eye rod or with weldless eye nut

Fig. 290, see page 119.

Features:

- Designed for heavy load up to 750° F

Ordering: Specify pipe size, figure number, name and finish.

Note: If different loads or dimensions are required, refer to Fig. 42 SD non-standard two bolt pipe clamp.



Note: This picture is representative of a typical Figure 216. Distance between clamp ears beneath pipe may or may not be equal to upper gap.

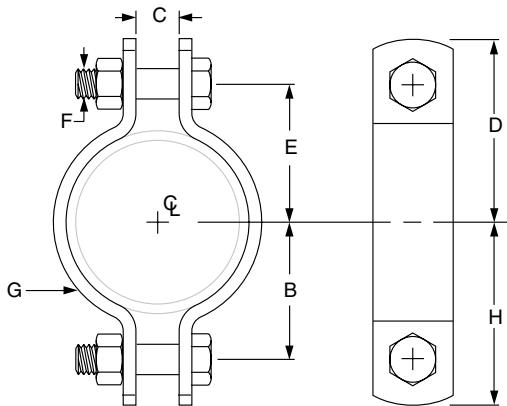


FIG. 216: DIMENSIONS (IN) • LOADS (LBS) • WEIGHT (LBS)

Pipe Size	Max Load For Service Temp		Weight	B	C	D	Rod Take Out E	F	G Width	H	
	650° F	750° F									
3	3,370	3,005	3.6	2 ¹⁵ / ₁₆	1	4	3 ¹ / ₈	3 ³ / ₄	2	3 ¹³ / ₁₆	
4	3,515	3,135	5.5	3 ⁹ / ₁₆		4 ⁷ / ₈	3 ³ / ₄			7 ⁷ / ₈	4 ¹¹ / ₁₆
5			6.3	4 ¹ / ₈		5 ¹ / ₂	4 ³ / ₈				5 ¹ / ₄
6	4,865	4,350	11.7	5	1 ¹ / ₈	6 ⁵ / ₈	5 ¹ / ₄	1	2 ¹ / ₂	6 ³ / ₈	
8		4,340	13.9	6 ³ / ₈		7 ⁵ / ₈	6 ¹ / ₄			7 ¹ / ₂	
10	6,010	5,360	22.3	7 ⁹ / ₁₆	1 ¹ / ₄	9 ¹ / ₁₆	7 ¹¹ / ₁₆	1 ¹ / ₄	3	8 ¹⁵ / ₁₆	
12	8,675	7,740	38.1	9	1 ⁵ / ₈	10 ⁷ / ₈	9 ¹ / ₄	1 ¹ / ₂		10 ⁵ / ₈	
14	9,120	8,135	46.8	9 ³ / ₄		11 ⁷ / ₈	10		11 ⁵ / ₈	3 ¹ / ₂	
16			51.4	10 ³ / ₄		12 ⁷ / ₈	11				12 ⁷ / ₈
18	13,800	–	130.1	14 ¹ / ₂	3	17 ¹ / ₄	14 ¹ / ₂	2	6	17 ¹ / ₄	
20	15,300	–	163.6	16		18 ³ / ₄	16		5	18 ³ / ₄	
24	16,300	–	215.2	18 ¹ / ₂	3 ³ / ₄	21 ¹ / ₂	18 ¹ / ₂	2 ¹ / ₄	6	21 ¹ / ₂	
28	18,000	–	302.8	20 ¹ / ₂		23 ¹ / ₂	20 ¹ / ₂		8	23 ¹ / ₂	
30	20,500	–	365.4	22 ¹ / ₂	3 ¹ / ₂	26	22 ¹ / ₂	2 ¹ / ₂	7	26	
32	23,750	–	431.7	23 ¹ / ₂		27	23 ¹ / ₂		8	27	
34	25,000	–	533.8	25		28 ¹ / ₂	25		8	28 ¹ / ₂	
36	28,000	–	575.1	26 ¹ / ₂		30 ¹ / ₄	26 ¹ / ₂			30 ¹ / ₄	
42	35,000	–	915.7	30		33 ³ / ₄	30			10	33 ³ / ₄

Fig. 224

Alloy Steel Pipe Clamp

Size Range: 4" through 16"

Material: Chrome molybdenum steel except U-bolt which is stainless steel.

Service: Recommended for suspension of high temperature pipe requiring up to 4" of insulation.

Maximum Temperature: 1,050° F

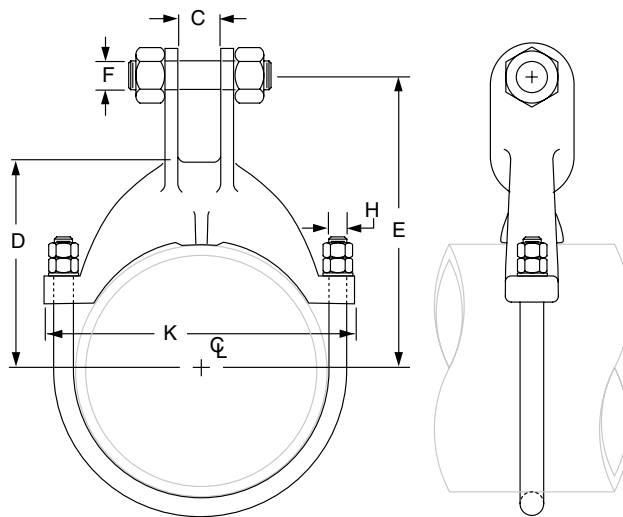
Approvals: Complies with Federal Specification A-A-1192A (Type 2), WW-H-171-E (Type 2), and MSS SP-58 (Type 2).

Installation: Normally used with welded eye rod Fig. 278 or weldless eye nut Fig. 290.

Features:

- Designed for the support of loads at temperatures up to 1,050° F.
- Designed to satisfy most critical engineering specifications.
- Yoke has rugged cross sectional area, eliminating high stress conditions.
- When used on pipe with 4" of insulation the top bolt is outside of the insulation.

Ordering: Specify pipe size, figure number and name.



Cast



Fabricated

FIG. 224: DIMENSIONS (IN) • LOADS (LBS) • WEIGHT (LBS)

Pipe Size	Max Load ■				Weight	C	D	Rod Take Out E	F	H	K
	750° F	950° F	1,000° F	1,050° F							
4	3,780	3,300	2,770	1,890	4.0	1 ¹ / ₁₆	3 ³ / ₈	6 ³ / ₄	7 ⁷ / ₈	1 ¹ / ₂	6 ¹ / ₂
6	6,060	5,290	4,440	3,030	7.5	1 ¹ / ₁₆	5 ⁷ / ₁₆	8 ⁵ / ₁₆	1	5 ⁵ / ₈	9 ¹ / ₈
8							6 ¹ / ₁₆	9 ⁹ / ₁₆			11 ¹ / ₈
10	9,060	7,910	6,640	4,420	15.8		8 ³ / ₈	10 ⁷ / ₈			1 ¹ / ₈
12	12,570	10,980	9,015	6,010	24.3	1 ¹⁵ / ₁₆	10 ¹⁰ / ₈	12 ⁷ / ₈	1 ¹ / ₂	7 ⁷ / ₈	16 ¹ / ₈
14					26.3		11 ¹ / ₈	13 ³ / ₈			17 ⁷ / ₈
16					31.0		12 ¹ / ₄	15			19 ³ / ₈

■ Based on the allowable stresses shown in the ASME Code for Pressure Piping. Over tightening of nuts may overstress U-bolts reducing the load rating. Installation tag attached to clamp gives proper nut tightening.

- Table of Contents
- Pictorial TOC
- General Notes
- Clevis Hangers & Shields
- Ring Hangers
- Pipe Clamps
- Riser Clamps
- U-Bolts & Straps
- CPVC
- AWWA
- Beam Clamps
- Ceiling Plates & Flanges
- Wall Brackets
- Welded Attachments
- Concrete Inserts & Attachments
- Rod & Eye Rods
- Rod Couplings & Turnbuckles
- Swivel Attachments
- Hardware & Accessories

Fig. 246

Heavy Duty Alloy Steel Pipe Clamp

Size Range: 10" through 24"

Material: Chrome molybdenum steel except U-bolt which is stainless steel.

Service: Recommended for suspension of high temperature pipe requiring up to 6" of insulation.

Maximum Temperature: 1,075° F

Approvals: Complies with Federal Specification A-A-1192A (Type 2), WW-H-171-E (Type 2), and MSS SP-58 (Type 2).

Installation: Normally used with welded eye rod Fig. 278 or weldless eye nut Fig. 290.

Features:

- Designed for the support of heavy loads at high temperatures.
- Clamp with filler plate will snugly hold pipe of non-standard size.
- Alloy load distribution strap provided.
- When used on pipe with 6" of covering, the top bolt is outside of the insulation.

Ordering: Specify nominal pipe size and exact O.D. of pipe, figure number, name.

Special alloy filler plates will be provided, at an extra charge, when the O.D. of the pipe size is other than standard. Installation instructions are attached to the clamp when the filler plates are required.



Cast



Fabricated

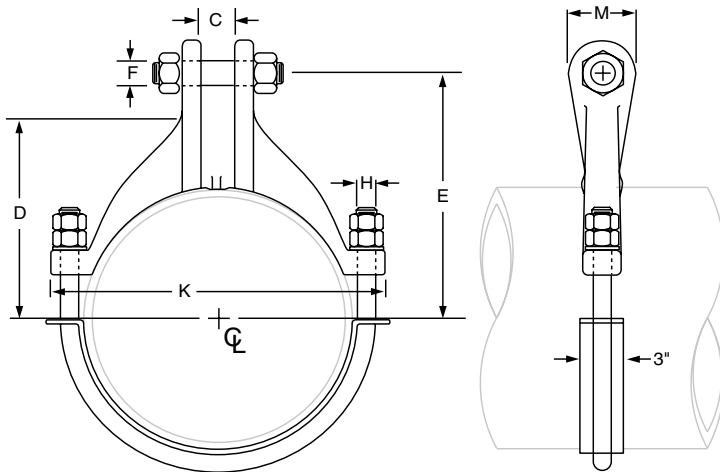


FIG. 246: DIMENSIONS (IN) • LOADS (LBS) • WEIGHT (LBS)

Pipe Size	Used on O.D. pipe size	Max Load ■				Weight*	C	D	Rod Take Out E	F	H	K	M
		950° F	1,000° F	1,050° F	1,075° F								
10	8¾ - 10 ¹³ / ₁₆	13,500	11,780	7,850	6,120	42.0	2	9 ⁹ / ₁₆	12	1½	1	15 ³ / ₈	3¼
12	10 ⁷ / ₈ - 12 ¹³ / ₁₆	16,500	14,910	9,940	7,750	58.0	2¼	10 ³ / ₄	13 ³ / ₄	1 ⁵ / ₈	1¼	17 ⁷ / ₈	4
14	12 ⁷ / ₈ - 14 ¹ / ₁₆							11½	14½			19 ¹ / ₈	
16	14 ¹ / ₈ - 16 ¹ / ₁₆							13 ³ / ₈	16 ³ / ₈			21 ¹ / ₈	
18	16 ⁷ / ₈ - 18 ¹ / ₁₆	19,000	18,410	12,270	9,570	94.0	2½	14½	18¼	2	1¼	24 ¹ / ₈	4½
20	18 ⁷ / ₈ - 20 ¹ / ₁₆							15¼	19½			26 ¹ / ₈	
24	20 ⁷ / ₈ - 24 ¹ / ₁₆	25,000	22,280	14,850	11,580	167.0	3	18¼	22	2¼	1 ⁵ / ₈	30¾	6

■ Based on the allowable stresses shown in the ASME Code for Pressure Piping. Over tightening of nuts may overstress U-bolts reducing the load rating. Installation tag attached to clamp gives proper nut tightening. * This weight does not include filler plates required on non-standard pipe sizes

Fig. 295 (Formerly Afcon Fig. 425)

Double Bolt Pipe Clamp

Size Range: 3/4" through 36"

Material: Carbon steel

Finish: Plain or Hot-Dip Galvanized with Zinc Plated Bolts & Nuts

Service: Recommended for suspension of pipe requiring insulation within the limitation of temperature and loads shown below.

Maximum Temperature: Plain 750° F, Galvanized 450° F

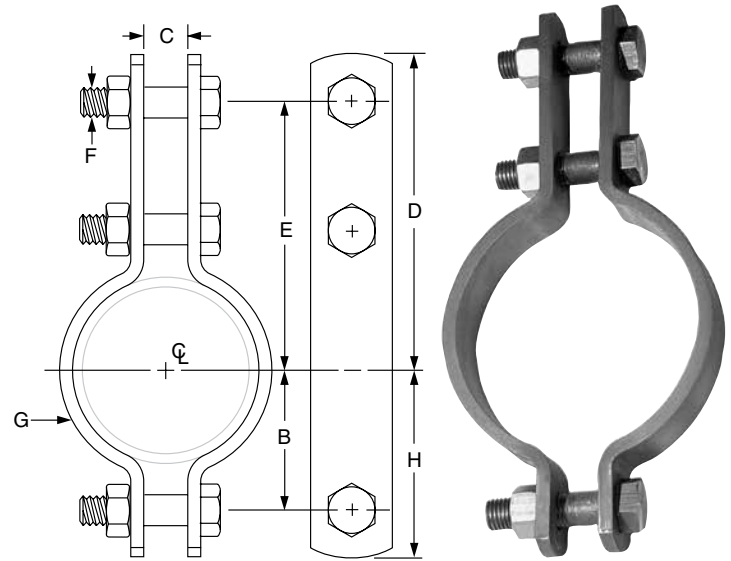
Approvals: Complies with Federal Specification A-A-1192A (Type 3), WW-H-171-E (Type 3), ANSI/MSS SP-69 and MSS SP-58 (Type 3).

Installation: Attachment to the clamp may be made with a welded eye rod Fig. 278, page 114 or the weldless eye nut Fig. 290, see page 119.

Features:

- Sizes 6" and above accommodate up to 4" thick insulation.
- Figure 41SD will accommodate larger insulation thicknesses, loads and dimensions.

Ordering: Specify pipe size, figure number, name and finish.



Note: This picture is representative of a typical Figure 295. Distance between clamp ears beneath pipe may or may not be equal to upper gap.

FIG. 295: DIMENSIONS (IN) • LOADS (LBS) • WEIGHT (LBS)

Pipe Size	Max Span Ft.	Max Load For Service Temp.		Weight	B	C	D	Rod Take Out E	F	G Width	H
		650° F	750° F								
3/4	7*	950	-	0.7	1 5/16	5/8	2 7/8	2 7/16	3/8	1	1 3/8
1				0.8	1 1/16		3	2 9/16			1 1/2
1 1/4				0.8	1 1/4		3 1/8	2 11/16			1 11/16
1 1/2	9*	1,545	1,380	2.3	1 13/16	1 1/16	4 7/8	4 1/8	5/8	1 1/4	2 3/8
2				2.6	2 1/8		5 7/8	5 1/8			2 11/16
2 1/2				1.97	2 5/8		6	5 3/8			3 1/4
3	12*	2,500	2,230	2.17	2 7/8	5/8	6 5/8	6	1/2	1	3 1/2
4				6.7	3 3/8		7 5/8	6 1/2			4 1/2
5				7.0	3 15/16		8 1/8	7			5
6	14*	2,865	2,555	7.31	4 7/8	1 1/16	9 3/8	8 1/2	3/4	2	5 3/4
8				8.33	6		10 3/8	9 1/2			6 7/8
10				19.8	6 7/8		12	10 7/16			8 1/4
12	22*	3,240	2,890	22.3	7 7/8	1 7/16	13	11 7/16	1	2 1/2	9 1/4
14				37.7	9 1/16		14 5/16	12 11/16			10 11/16
16				41.4	10 1/16		15 5/16	13 11/16			11 11/16
18	20	4,300	3,835	44.9	11 1/16	2	16 5/16	14 11/16	1 1/4	3	12 11/16
20				57.3	12 3/8		17 5/8	15 5/8			14
24				65.9	14 3/8		19 3/8	17 7/8			16
28	12	5,490	4,900	112.3	17 1/2	2 1/4	24 1/4	21 3/4	1 3/8	4	20
30				150.0	18 1/2		26 1/8	23 3/8			21 1/4
32				193.3	19 5/8		28	25			22 5/8
34	9	7,500	-	248.8	21 1/2	2 1/2	31 1/4	27 3/4	1 1/2	5	25
36				257.5	22 1/2		32 1/4	28 3/4			26

Clamps may be furnished with square ends. "Span" represents the maximum recommended distance between hangers on a continuous and straight run of horizontal standard weight steel pipe filled with water. In all cases, verify that chosen location of hangers does not subject hangers to a load greater than the maximum recommended load shown above. *Indicates that span represents the maximum span for water filled pipe as given in Table 1 of page 268. For vapor service, the presence of fittings or insulation, and other weights and types of pipe, spans may either increase or decrease. In all cases, verify that chosen location of hanger does not subject hangers to a load greater than the maximum recommended load shown.



- Table of Contents
- Pictorial TOC
- General Notes
- Clevis Hangers & Shields
- Ring Hangers
- Pipe Clamps
- Riser Clamps
- U-Bolts & Straps
- CPVC
- AWWA
- Beam Clamps
- Ceiling Plates & Flanges
- Wall Brackets
- Welded Attachments
- Concrete Inserts & Attachments
- Rod & Eye Rods
- Rod Couplings & Turnbuckles
- Swivel Attachments
- Hardware & Accessories

Fig. 295A

Alloy Double Bolt Pipe Clamp

Size Range: 1½" through 24"

Material: Chrome molybdenum steel (ASTM A 387 Grade 22).

Service: Recommended for suspension of high temperature pipe requiring insulation.

Maximum Temperature: 1,050° F

Approvals: Complies with Federal Specification A-A-1192A (Type 3)

WW-H-171-E (Type 3), ANSI/MSS SP-69 and MSS SP-58 (Type 3).

Features:

- Sizes 6" and above accommodate up to 4" thick insulation.
- Figure 41SD will accommodate larger insulation thicknesses, loads and dimensions.

Ordering: Specify pipe size, figure number and name.

Note: Galvanizing is not recommended for alloy products.



Note: This picture is representative of a typical Figure 295A. Distance between clamp ears beneath pipe may or may not be equal to upper gap.

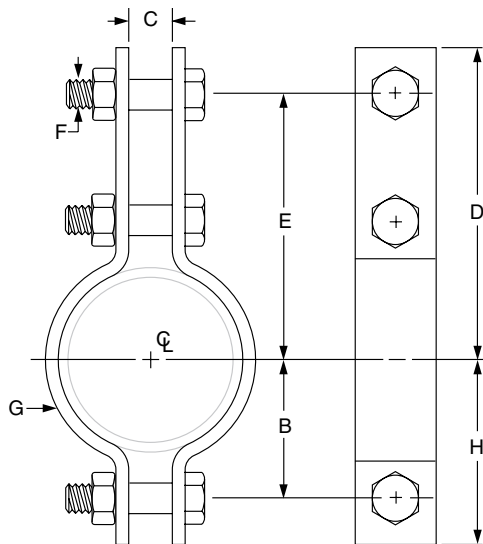


FIG. 295A: DIMENSIONS (IN) • LOADS (LBS) • WEIGHT (LBS)

Pipe Size	Max Load ■ For Service Temp				Weight	B	C	D	Rod Take Out E	F	G Width	H	
	650° F	750° F	1,000° F	1,050° F									
1½	1,545	1,410	1,000	745	2.3	1 ¹³ / ₁₆	1 ¹ / ₁₆	4 ⁷ / ₈	4 ¹ / ₈	5 ⁵ / ₈	1 ¹ / ₄	2 ³ / ₈	
2					2.6	2 ¹ / ₈		5 ⁵ / ₈	5 ¹ / ₈			2 ¹¹ / ₁₆	
2½					2.7	2 ⁵ / ₁₆		6 ¹ / ₈	5 ³ / ₈			2 ⁵ / ₁₆	
3					3.0	2 ³ / ₄		6 ¹¹ / ₁₆	5 ¹⁵ / ₁₆			3 ¹ / ₂	
4					6.7	3 ³ / ₈		7 ⁵ / ₈	6 ¹ / ₂			4 ¹ / ₂	
5	2,500	2,290	1,625	1,200	7.0	3 ¹⁵ / ₁₆	8 ¹ / ₈	7	3 ³ / ₄	2	5		
6	2,865	2,620	1,860	1,380	11.5	4 ³ / ₄	1 ⁷ / ₁₆	9 ¹⁵ / ₁₆	8 ⁹ / ₁₆	7 ⁷ / ₈	2 ¹ / ₂	6 ¹ / ₈	
8					13.2	5 ³ / ₄		10 ¹⁵ / ₁₆	9 ⁹ / ₁₆			7 ⁷ / ₈	
10					19.8	7 ¹ / ₁₆		12	10 ⁵ / ₈			1	8 ³ / ₄
12					22.3	8 ¹ / ₁₆		13	11 ⁵ / ₈			9 ⁵ / ₁₆	
14	4,300	3,915	2,795	2,060	37.7	9 ¹ / ₁₆	2	14 ⁵ / ₁₆	12 ¹¹ / ₁₆	1 ¹ / ₄	3	10 ¹¹ / ₁₆	
16					41.4	10 ¹ / ₁₆		15 ⁵ / ₁₆	13 ¹¹ / ₁₆			11 ¹¹ / ₁₆	
18					44.9	11 ¹ / ₁₆		16 ⁵ / ₁₆	14 ¹¹ / ₁₆			12 ¹¹ / ₁₆	
20					57.3	12 ³ / ₈		17 ¹ / ₂	15 ⁷ / ₈			14	
24					65.9	14 ³ / ₈		19 ¹ / ₂	17 ⁷ / ₈			1 ³ / ₈	16

■ Based on the allowable stresses shown in the ASME Code for Pressure Piping.

Fig 295H

Heavy Duty Double Bolt Pipe Clamp

Size Range: 6" through 36"

Material: Carbon steel

Finish: Plain or Hot-Dip Galvanized with Zinc Plated Bolts & Nuts

Service: Recommended for suspension of pipe requiring insulation within the limitation of temperature and loads shown below.

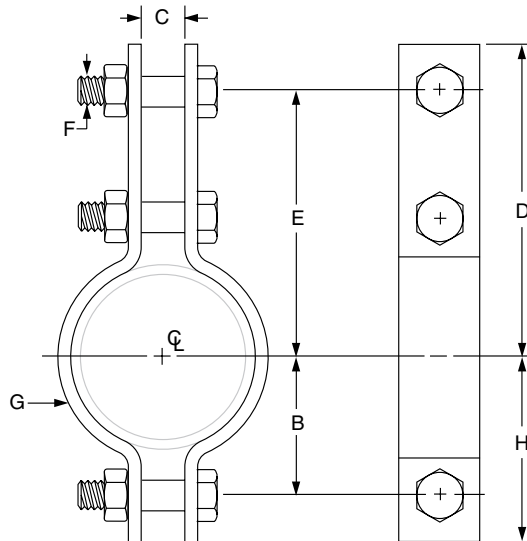
Maximum Temperature: Plain 750° F, Galvanized 450° F

Approvals: Complies with Federal Specification A-A-1192A (Type 3) WW-H-171-E (Type 3), ANSI/MSS SP-69 and MSS SP-58 (Type 3).

Features:

- Accommodates up to 4" thick insulation.
- Figure 41SD will accommodate larger insulation thicknesses, loads and dimensions.

Ordering: Specify pipe size, figure number, name and finish.



Note: This picture is representative of a typical Figure 295H. Distance between clamp ears beneath pipe may or may not be equal to upper gap.

FIG 295H: DIMENSIONS (IN) • LOADS (LBS) • WEIGHT (LBS)

Pipe Size	Max Load For Service Temp		Weight	B	C	D	Rod Take Out E	F	G Width	H
	650° F	750° F								
6	3,500	3,125	12.0	4 ³ / ₄	1 ³ / ₄	10 ¹³ / ₁₆	8 ¹⁵ / ₁₆	1	2 ¹ / ₂	6
8	4,800	4,285	18.5	6	2	11 ³ / ₈	10 ⁷ / ₈	1 ¹ / ₈		7 ¹ / ₄
10	5,500	4,910	30.3	7 ¹ / ₄	2 ¹ / ₄	13 ³ / ₈	11 ³ / ₈	1 ¹ / ₄	3 ¹ / ₂	9
12	7,000	6,250	42.0	8 ⁵ / ₈	2 ¹ / ₂	14 ⁵ / ₁₆	12 ⁹ / ₁₆	1 ³ / ₈		10 ³ / ₈
14	9,500	8,485	60.0	9 ⁵ / ₈		3	15 ¹ / ₂	13 ¹ / ₂	1 ¹ / ₂	4
16	10,000	8,930	80.0	10 ⁷ / ₈	3 ¹ / ₂		17 ⁷ / ₈	14 ⁷ / ₈	1 ³ / ₄	4 ¹ / ₂
18	13,800	12,325	115.0	12 ¹ / ₂		4	18 ¹ / ₄	16 ¹ / ₄	2	4
20	15,300	13,665	140.0	13 ¹ / ₂	4 ¹ / ₂		19 ³ / ₄	17 ¹ / ₄		2 ¹ / ₄
24	16,300	14,555	190.0	15 ¹ / ₂		4 ¹ / ₂	22 ⁵ / ₁₆	19 ⁵ / ₁₆	2 ¹ / ₄	
28	18,000	–	354.0	18 ⁷ / ₈	4 ¹ / ₂		31 ³ / ₄	27 ¹ / ₄		2 ¹ / ₄
30	20,500	–	406.0	19 ⁷ / ₈		4 ¹ / ₂	32 ³ / ₄	28 ¹ / ₄	2 ¹ / ₄	
32	23,750	–	555.0	21 ³ / ₄	4 ¹ / ₂		36	31		2 ¹ / ₂
34	25,000	–	604.0	23 ³ / ₈		4 ¹ / ₂	37 ¹ / ₂	32 ¹ / ₂	2 ¹ / ₂	
36	28,000	–	678.0	24 ³ / ₈	4 ¹ / ₂		40 ¹ / ₄	34 ³ / ₄		2 ³ / ₄

Clamps may be furnished with square ends.



- Table of Contents
- Pictorial TOC
- General Notes
- Clevis Hangers & Shields
- Ring Hangers
- Pipe Clamps
- Riser Clamps
- U-Bolts & Straps
- CPVC
- AWWA
- Beam Clamps
- Ceiling Plates & Flanges
- Wall Brackets
- Welded Attachments
- Concrete Inserts & Attachments
- Rod & Eye Rods
- Rod Couplings & Turnbuckles
- Swivel Attachments
- Hardware & Accessories