

U-BOLTS & STRAPS

Fig. 244

Pipe Strap – Round

Size Range: 1/2" through 6" pipe

Material: Carbon steel

Finish: Plain

Service: Restraint of pipe in specified direction while permitting movement in non-restrained direction.

Maximum Temperature: 650° F

Ordering: Specify figure number, name, and pipe size. Larger sizes available upon request.



**FIG. 244:
DIMENSIONS (IN) • LOADS (LBS) • WEIGHT (LBS)**

Pipe Size	Rated Load		L	T	W	Weight
	Ps	Pn				
1/2	250	1,500	1	1/4	2	0.39
3/4			1 1/16			0.47
1			1 7/16			0.56
1 1/4	500	2,000	1 3/4	3/8	3	1.62
1 1/2			2			1.81
2			2 1/2			2.20
2 1/2	650	2,300	3	1/2	4	3.56
3			3 3/8			5.74
4			4 3/4			7.16
6			6 3/4			15.32

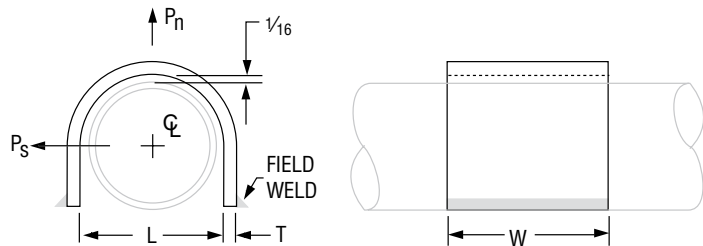


Fig. 262 (Formerly Afcon Fig. 500)

Strap Short

Size Range: 1/2" through 4"

Material: Carbon steel

Finish: Plain or Zinc Plated (Hot-Dip Galvanized optional)

Maximum Temperature: 650° F

Approvals: Complies with Federal Specification A-A-1192A (Type 26), WW-H-171-E (Type 26), ANSI/MSS SP-69 and MSS SP-58 (Type 26).

Ordering: Specify pipe size, figure number, name and finish.

Note: The acceptability of galvanized coatings at temperatures above 450°F is at the discretion of the end user.

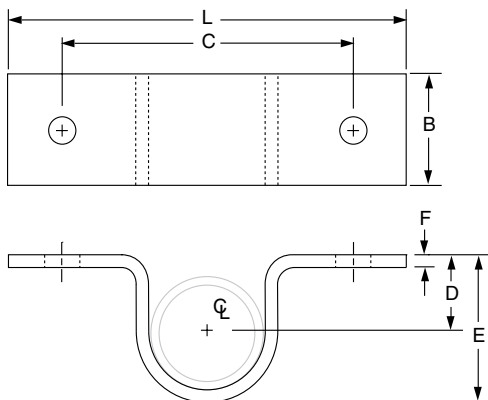


FIG. 262: DIMENSIONS (IN) • LOADS (LBS) • WEIGHTS (LBS)

Pipe Size	Max Load		Weight	Screw or Bolt Size ■	L	B	C	D	E	F
	w/Lag Screws	w/Bolts to Steel								
1/2	300	410	0.20	Two #18 x 2 steel wood screws or two 3/8" bolts to steel	4	1 1/4	2 3/4	1/2	1 1/8	1/8
3/4			0.23		4 3/8		3 1/8	1 1/16	1 7/16	
1			0.26		4 3/4		3 1/2	1 1/16	1 5/8	
1 1/4			0.36		5		3 3/4	1 1/16	2 1/8	
1 1/2			0.54		5 3/8		4 1/8	1 3/8	2 1/2	
2			0.60		6 3/8		5 1/8	1 1/4	2 3/4	
2 1/2	450	610	1.40	Two #18 x 3 steel wood screws or two 3/8" bolts to steel	6 13/16	1 1/2	5 9/16	1 3/4	3 3/8	1/4
3			1.60		7 5/16		6 1/16	1 7/8	4	
3 1/2			1.80		7 13/16		6 9/16	2 3/16	4 5/8	
4			1.90		8 3/8		7 1/8	2 5/8	5	

■ Screws or bolts not included

Fig. 266

Light Duty Two Hole Pipe Strap

Size Range: 3/8" through 4"

Material: Carbon steel, Pre-Galvanized

Ordering: Specify pipe size, figure number, name and finish.

Note: Intended for restraint of pipe in horizontal or vertical installations.

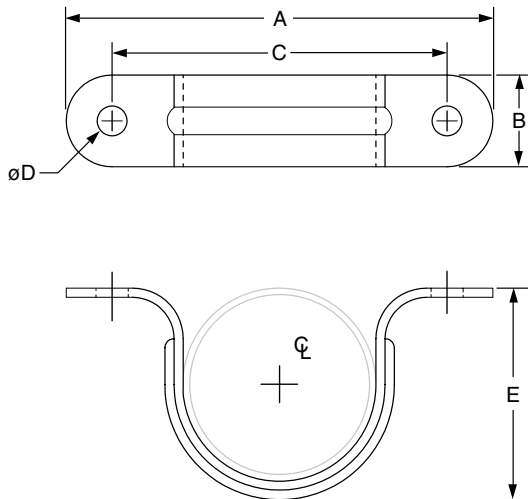


FIG. 266: DIMENSIONS (IN) • WEIGHTS (LBS)

Pipe Size	Weight per 100pcs	A	B	C	øD	E
3/8	2	2.40	0.75	0.67	0.25	0.70
1/2	3	2.52		0.83		0.87
3/4	5	2.68		1.06		1.10
1	8	3.15		1.30		1.34
1 1/4	9	3.66		1.65		1.65
1 1/2	11	4.06		1.89		1.87
2	13	5.04		2.36		2.36
2 1/2	15	5.67		2.87		2.95
3	16	6.42		3.50		3.51
4	39	7.72		4.49		4.49

Screws or bolts not included.

- Table of Contents
- Pictorial TOC
- General Notes
- Clevis Hangers & Shields
- Ring Hangers
- Pipe Clamps
- Riser Clamps
- U-Bolts & Straps**
- CPVC
- AWWA
- Beam Clamps
- Ceiling Plates & Flanges
- Wall Brackets
- Welded Attachments
- Concrete Inserts & Attachments
- Rod & Eye Rods
- Rod Couplings & Turnbuckles
- Swivel Attachments
- Hardware & Accessories