

Fig. 297 and Fig. 298 Sway Brace Assembly Fig. 302 and Fig. 303: with Adjustable Preload Fig. C-297, Fig. C-298, Fig. C-302 and Fig. C-303: Corrosion Resistant

The Fig. 297 and Fig. 302 consist of a structural attachment, two studs, the Sway Brace, extension piece up to 2' 0" in length as required, and a modified Fig. 295 pipe clamp.

The Fig. 298 and Fig. 303 consist of a structural attachment, two studs, the Sway Brace, adjustable extension piece 2' 1" in length or over as required, an adapter and a tolerated pipe clamp.

Note: In specifying Sway Brace assemblies where the "W" dimension exceeds 2' 0" in length, the Fig. 298 or Fig. 303 assembly is required. Verify that calculated "W" is within the min/max shown in table.

Ordering assemblies: Specify figure number, name, Sway Brace size, pipe size, "W" dimension. Available corrosion resistant as Fig. C-297, C-298, C-302 and C-303.

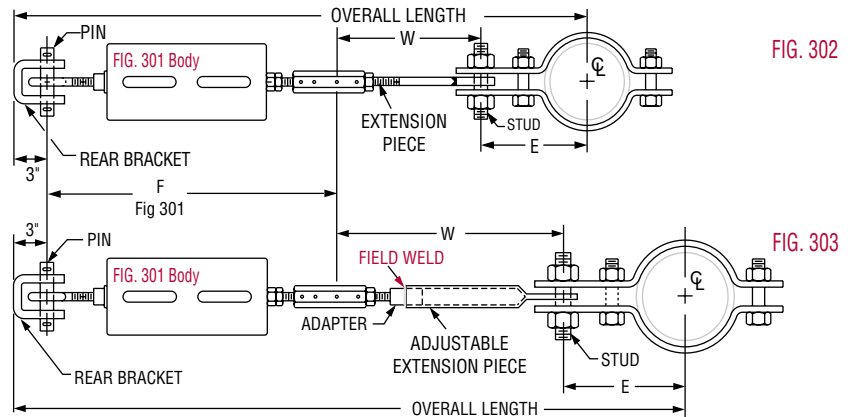
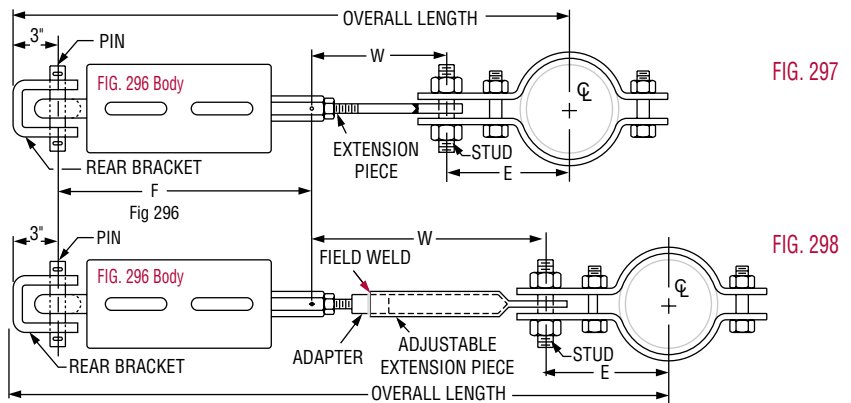


FIG. 297, 298, 302, 303, C-297, C-298, C-302 AND C-303: DIMENSIONS (IN)

Pipe Size	E		
	Size 1 - 4 Carbon	Size 5 & 6 Carbon	Size 5 & 6 Alloy
1½	4⅞	—	—
2	5⅞	—	—
2½	5¾	—	—
3	5 ¹⁵ / ₁₆	—	—
3½	6 ³ / ₁₆	—	—
4	6½	—	—
5	7	—	—
6	8 ⁹ / ₁₆	11 ⁷ / ₁₆	12 ¹ / ₁₆
8	9 ⁹ / ₁₆	12 ⁷ / ₁₆	13 ³ / ₁₆
10	10 ⁵ / ₈	13½	14 ³ / ₈
12	11 ⁵ / ₈	14¾	15 ³ / ₈
14	12 ¹¹ / ₁₆	15 ³ / ₈	16
16	13 ¹¹ / ₁₆	16 ³ / ₈	17
18	14 ¹¹ / ₁₆	17 ³ / ₈	18
20	15 ⁵ / ₈	19	19½
24	17 ⁵ / ₈	21 ⁵ / ₈	22 ⁵ / ₈
30	—	25 ¹ / ₈	25 ⁵ / ₈
	—		

FIG. 297, 298, 302, 303, C-297, C-298, C-302 AND C-303: DIMENSIONS (IN)

Sway Brace Size	W			
	Fig. 297, 302		Fig. 298, 303	
	Min	Max	Min	Max
1	7 ¹⁵ / ₁₆	24	24	90 ³ / ₁₆
2	8 ⁹ / ₁₆	24	24	86 ¹¹ / ₁₆
3	8 ⁹ / ₁₆	24	24	79 ⁹ / ₁₆
4	9 ¹¹ / ₁₆	24	24	74 ¹³ / ₁₆
5	9 ¹³ / ₁₆	24	24 ⁷ / ₈	92
6			24	90