

Fig. 75 SD

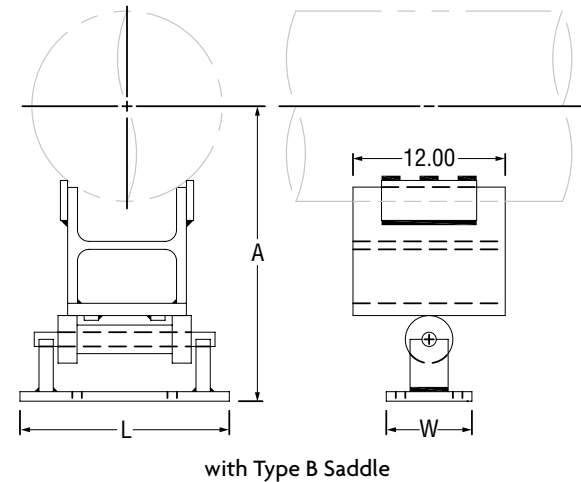
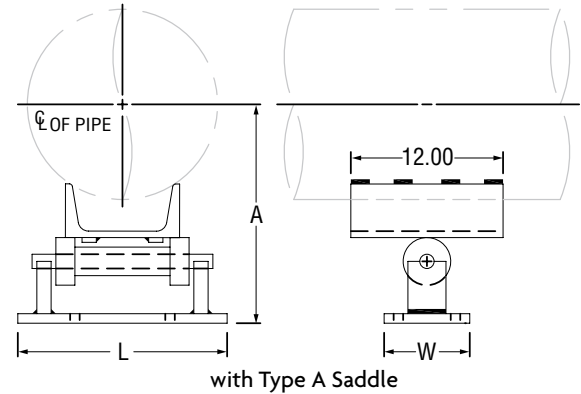
Flat Roller With Saddle

This product is a special design per customer requirements. Contact Anvil International for further information and how to order.

Note: Type B Saddle - If attached to alloy pipe, furnish material specification applicable to the pipe. (Alloy Bars furnished for attachment to alloy pipe only.)

Contact Anvil EPS for: non-standard dimensions, loads larger than specified, special designs and non-conductive rollers.

FIG. 75SD: LOADS (LBS) • DIMENSIONS (IN)					
Pipe Size	Recommended Load	A		L	W
		Type A	Type B		
4	2,380	6.19	7.38	6.00	5.00
5		6.81	8.00		
6		7.44	5.56		
8	5,680	10.88	13.31	9.50	8.00
10		12.25	14.62		
12		13.38	15.75		
14	9,240	14.62	17.88	12.00	8.00
16		15.75	19.06		
18		16.88	20.19		
20	12,610	17.81	22.00	17.00	10.00
22		19.06	23.19		
24		20.19	24.38		
26		21.38	25.50		
28	17,620	23.44	27.62	23.00	12.00
30		24.69	25.88		
32		25.88	30.12		
34		27.00	31.25		
36		28.19	32.38		
42		31.56	35.75		



For temperatures exceeding 650°, use Type B.

Ordering: Specify pipe size and Figure 75SD.

PROJECT INFORMATION		APPROVAL STAMP	
Project:		<input type="checkbox"/> Approved	
Address:		<input type="checkbox"/> Approved as noted	
Contractor:		<input type="checkbox"/> Not approved	
Engineer:		Remarks:	
Submittal Date:			
Notes 1:			
Notes 2:			