

## Fig. 47

### Concrete Single Lug Plate

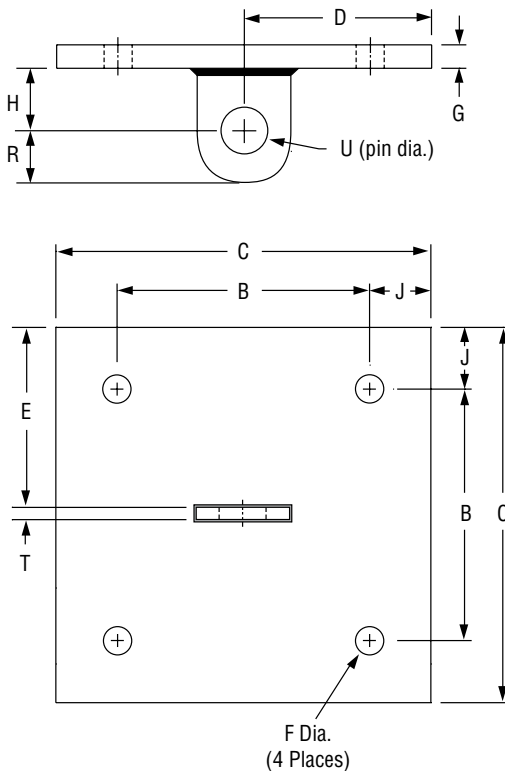
**Size Range:** 1/2" through 2"

**Material:** Carbon steel

**Finish:** Plain or Hot-Dip Galvanized

**Service:** Structural attachment to concrete ceiling lug is used in conjunction with Fig. 299 (see page 120) forged steel clevis and anchors of sufficient strength to hold the desired load.

**Ordering:** Specify rod size, figure number, name and finish.



**FIG. 47: DIMENSIONS (IN) • LOAD (LBS) • WEIGHT (LBS)**

Rod Size A	Max Load ■	Weight	J	B	C	D	E	F	G	H	R	T	U
1/2	1,350	11.1	1	8	10	5	4 7/8	9/16	3/8	1 1/2	1 1/4	1/4	5/8
5/8	2,160	14.6					1/2	3/4					
3/4	3,230	14.8					4 13/16	1 1/16	3/4	2			7/8
7/8	4,480	22.0					5 3/4	1 3/16	1 1/2	1 1/2			1
1	5,900	31.9	2	12	12	6	5 11/16	1 5/16	1	3	2 1/2	1/2	1 3/8
1 1/4	9,500	43.8					5 5/8	1 1/8	1 1/4				3
1 1/2	13,800	45.6					1 3/8	1 1/4	4	3			1 7/8
1 3/4	18,600	55.7					1 3/8	1 1/4					2 1/4
2	24,600	58.2					1 3/8	1 1/4	4	3			2 1/4

■ Based on the rod diameter only. Rating is subject to the conditions that the concrete and anchors used are of sufficient strength to hold the load.

## Fig. 49

### Concrete Clevis Plate

**Size Range:** 3/8" through 1 3/4"

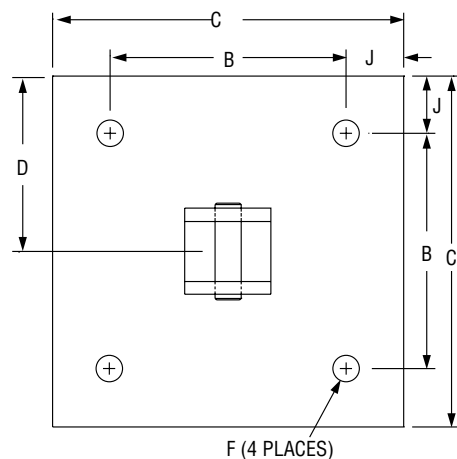
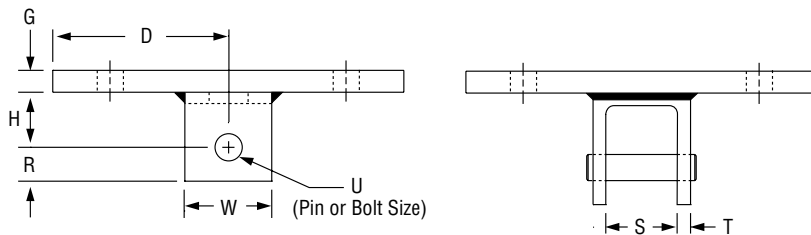
**Material:** Carbon steel

**Finish:** Plain or Hot-Dip Galvanized with Zinc Plated Fasteners

**Service:** Structural attachment to concrete ceiling where flexibility is desired. Concrete clevis plate is normally used in conjunction with Fig. 290, page 119, weldless eye nut, or Fig. 278, page 114 welded eye rod and anchors of sufficient strength to hold the desired load.

**Ordering:** Specify rod size, figure number, name and finish.

**Note:** Sizes 3/8" through 1" are supplied with bolt and nut. Larger sizes are supplied with pin and cotters.



**FIG. 49: DIMENSIONS (IN) • LOAD (LBS) • WEIGHT (LBS)**

Rod Size A	Max Load ■	Weight	J	B	C	D	F	G	H	R	S	T	U	W				
3/8	730	11.8	1	8	10	5	9/16	3/8	2	7/8	1 1/4	1/4	1/2	2				
1/2	1,350	11.9											5/8					
5/8	2,160	15.7					3/4											
3/4	3,230	16.9					2 1/2											
7/8	4,480	18.1						1										
1	5,900	36.9	2	12	12	6	13/16	3/4	3	1 1/2	2 1/2	1/2	1 1/8	3				
1 1/4	9,500	40.9					15/16					2	5/8	1 3/8	4			
1 1/2	13,800	59.8					1 1/8	1	4	2 1/2	3	3/4	1 5/8	5				
1 3/4	18,600	93.6					10	14	14	7	1 3/8	1 1/4	5	2 3/4	3 1/2	1/2	1 7/8	

■ Based on the rod diameter only. Rating is subject to the conditions that the concrete and anchors used are of sufficient strength to hold the load.

- Table of Contents
- Pictorial TOC
- General Notes
- Clevis Hangers & Shields
- Ring Hangers
- Pipe Clamps
- Riser Clamps
- U-Bolts & Straps
- CPVC
- AWWA
- Beam Clamps
- Ceiling Plates & Flanges
- Wall Brackets
- Welded Attachments
- Concrete Inserts & Attachments**
- Rod & Eye Rods
- Rod Couplings & Turnbuckles
- Swivel Attachments
- Hardware & Accessories

## Fig. 52

### Concrete Rod Attachment Plate

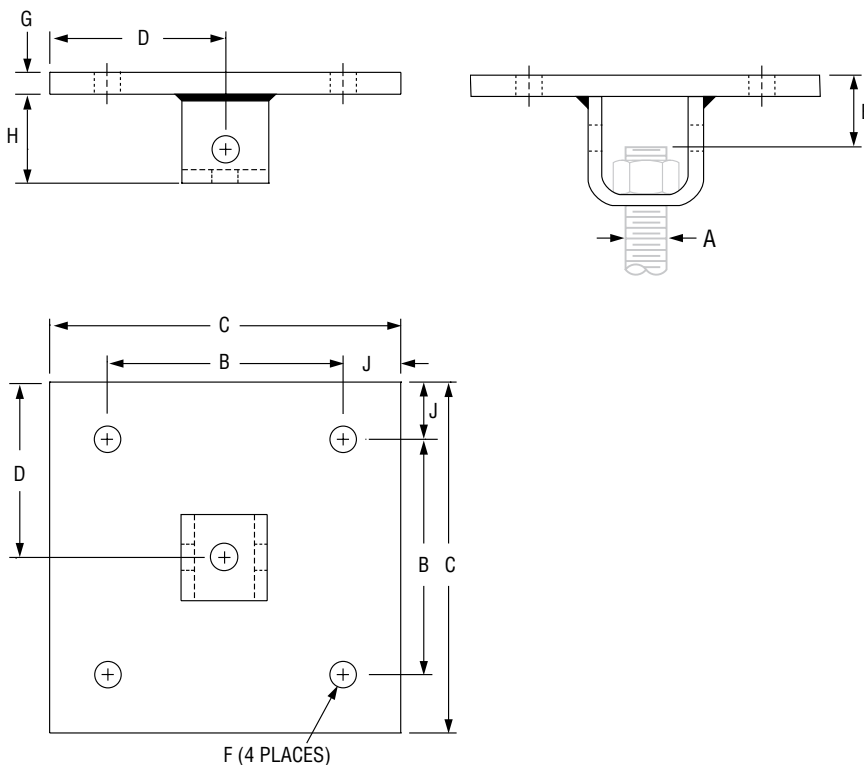
**Size Range:**  $\frac{3}{8}$ " through  $1\frac{1}{4}$ "

**Material:** Carbon steel

**Finish:** Plain or Hot-Dip Galvanized

**Service:** Structural attachment to concrete ceiling where vertical adjustment is desired. Normally used with threaded rod and nut and anchors of sufficient strength to hold the desired load.

**Ordering:** Specify rod size, figure number, name and finish.



**FIG. 52: DIMENSIONS (IN) • LOAD (LBS) • WEIGHT (LBS)**

Rod Size A	Max Load ■	Weight	J	B	C	D	E	F	H	G
$\frac{3}{8}$	730	11.6	1	8	10	5	$\frac{2}{4}$	$\frac{9}{16}$	$\frac{2}{8}$	$\frac{3}{8}$
$\frac{1}{2}$	1,350	11.6					$\frac{2}{8}$			
$\frac{5}{8}$	2,160	15.1					$\frac{2}{4}$	$\frac{11}{16}$	$\frac{3}{8}$	
$\frac{3}{4}$	3,230	16.1					$\frac{3}{8}$			$\frac{4}{4}$
$\frac{7}{8}$	4,480	16.7	2	12	6	$\frac{3}{2}$	$\frac{13}{16}$	$\frac{4}{2}$	$\frac{3}{4}$	
1	5,900	34.9				$\frac{3}{8}$				
$1\frac{1}{4}$	9,500	40.9				$\frac{15}{16}$	5			

■ Based on the rod diameter only. Rating is subject to the conditions that the concrete and anchors used are of sufficient strength to hold the load.